

STRONGLINE™



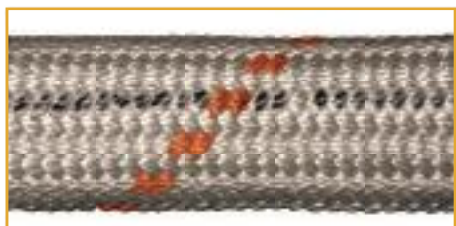
STRONGLINE™ rope has a construction consisting of a parallel core with a braided protective cover. The parallel core results in a very high strength compared to the diameter and material. The protective cover ensures a long life-time of the rope due to its excellent resistance against abrasion. Regular maintenance can lengthen the life-time even more. The main application of this rope will be towing and mooring.



SPECIFIC GRAVITY	• 1,38	CONSTRUCTION	• parallel cores with jacket
UV-RESISTANCE	• excellent	TCLL VALUE	• 70 %
ABRASION RESISTANCE	• excellent	COLOUR	• white
CHEMICAL RESISTANCE	• good	MARKER YARN	• orange
ELONGATION	• see graph	WATERABSORPTION	• < 1 %
MELTING POINT	• approx. 265°C		

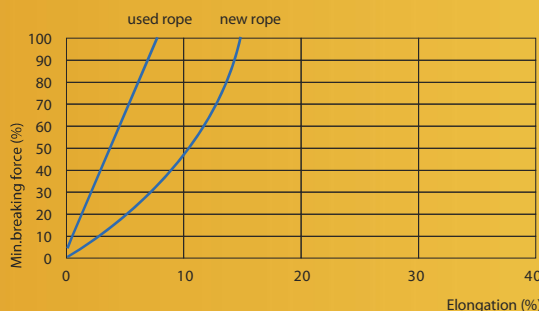


When STRONGLINE™ is installed on a towing winch, twists in the rope induced during installation could reduce the life time of the rope once put to work. It is crucial to use a turning table for unwinding from a coil. To facilitate the installation with respect to avoiding induced twists, a longitudinal marking has been made to the STRONGLINE™ from the factory. Please make sure the longitudinal marking line is always on the same position while winding up the STRONGLINE™ on your towing winch.



Art. number	Diameter (mm)	Weight (kg/100m)	MBF (kN)	Weight (lbs/100 ft)	MBF (lbs)
081032	32	76,5	353	51	79.358
081036	36	95	440	64	98.916
081040	40	131	533	88	119.823
081044	44	147	638	99	143.428
081048	48	175	750	117	168.607
081052	52	189	870	127	195.584
081056	56	227	995	152	223.685
081060	60	256	1.130	172	254.034
081064	64	284	1.270	190	285.507
081068	68	307	1.420	206	319.229
081072	72	367	1.570	246	352.950
081076	76	390	1.730	261	388.920
081080	80	417	1.890	280	424.889
081088	88	493	2.250	331	505.820
081092	92	528	2.450	354	550.782
081096	96	560	2.630	375	591.248
081100	100	610	2.840	409	638.458
081104	104	662	3.090	444	694.660
081112	112	778	3.650	522	820.553

Diameter, weight and MBF (as well as other mechanical and physical properties) are determined according ISO 2307:2005. The MBF refers to the breaking strength in the rope/wire itself, without splices or any other form of termination that can be formed with or without the use of accessories/ fittings.



For users of this Lankhorst product it is possible to join our Recycling program. Please consult our sales department for the program conditions.